

ELITE CU mini 1200

User manual



Version September 2023



THIS PAGE IS NOT WRITTEN INTENTIONALLY



1. FIRST STEPS

Congratulations on your purchase of the ELITE model CU mini 1200 knives grinding machine.

Read this guide before you start.

The ELITE CU mini model 1200 is an industrial blade sharpener and grinder to achieve optimal quality for the work for which it has been intended. Its design and programming make it possible to optimize grinding work in an agile and safe way.

This manual introduces you to the main functions of the grinder in order to avoid risks to your health or that may cause a breakdown or premature wear of the machine.

In case of any doubt, please contact us directly or one of our authorized distributors.

***Informative Note:** The use described in the manual of this knives grinder described therein may present some variations in use as our machinery is subject to possible construction modifications, depending on the incorporation of technological advances in our sharpening equipment.*



2.SAFETY

2.1.Safety regulations

Carefully observe and apply the following safety rules, not respecting these rules may cause personal injury or damage to the machine itself.

The installation and maintenance of the machine described in this manual must be carried out only by operators who are familiar with its operation and have sufficient technical knowledge.

The ELITE model CU mini 1200 have been designed for the sharpening of knives, excluding any other type of operation.



DANGER HIGH VOLTAGE



DANGER OF ACCIDENT



DANGER DUE TO SPARK PROJECTION



WEAR PROTECTIVE SHOES



DANGER FROM SHARP TOOLS



USE HEARING PROTECTORS

These warnings do not include all possible risks that improper use of the machine could cause. For this reason, the operator must proceed with prudence and observing the rules.



2.2. Use and storage of the instruction manual

This instruction manual must be read and understood by all personnel who come into contact with the machine.

This manual is for:

- Indicate the correct use of the machine according to the type of work to be carried out.
- Provide the necessary instructions for the transport, adjustment and maintenance of the machine.
- Facilitate the ordering of spare parts and information on risks.

Limits of use of the manual:

The machine is intended for professional use and therefore the experience of the operator is required and of vital importance.

Importance and conservation of the manual:

This manual must be considered part of the machine and must therefore be attached to it until the end of its use.

Additional information and clarifications:

The user, owner or maintenance person can contact the manufacturer to request any additional information on the use of the machine and possible modalities for maintenance and repair intervention.

Expiration of responsibility:

The manufacturer is considered exempt from any liability in the event of:

- Improper use of the machine
- Use of the machine by untrained persons
- Serious failures in scheduled maintenance
- Unauthorized interventions or modifications
- Use of non-original spare parts.



THIS PAGE IS NOT WRITTEN INTENTIONALLY



2.3. Declaration of conformity

The company hereby:

Elite Sharpening Machines, SLU

Joan Oró, 27

ES-08635 Sant Esteve Sesrovires

declares that the product indicated below, based on its conception and construction, as well as the version put on the market by our company, complies with the mandatory basic health and safety requirements of the CE directive.

This declaration loses its validity in the event of unauthorized modifications to the product.

Product name: **ELITE CU mini 1200**

Product type: **Blade sharpener and grinder machine**

Serial No.: _____

EC Directive Competences:

- **EC Machinery Directive (2006/42/EC)**
- **European directive on electromagnetic compatibility (2014/30/EU)**
- **The protection purposes of the CE low voltage directive (2006/95/CE) were fulfilled according to annex I, nr. 1.5.1 of the machinery directive 2006/42/EC**

The technical documentation was compiled by Legal representative of the documentation:

Sergi Valls Gramunt

Joan Oró, 27

ES-08635 Sant Esteve Sesrovires

Date / manufacturer - Signature: _____

Signatory data: Sergi Valls Gramunt, manager



THIS PAGE IS NOT WRITTEN INTENTIONALLY



3. TECHNICAL DATA

In the following information table, find the list of technical specifications of the machine described in this manual.

TECHNICAL CHARACTERISTICS

Useful work capacity	Up to 1230 mm.
Grinding wheel motor power	3 HP for 50 Hz version. 4 HP for 60 Hz version . Optional: 4 HP in 50 Hz version / 5 HP in 60 Hz version
Grinding wheel diameter	150 mm.
Magnetic clamping chuck	1230 x 100 mm.
Displacement of the motorized carriage	Movement on linear guides and translation by wheel.
Chuck rotation	0° to +90°.
Control panel	With LCD screen with program storage.
Grinding wheel automatic and programable downfeed	By means of guides with anti-friction vibration-dampening slide bearings and trapezoidal spindle.
Refrigeration equipment	70 liter capacity
Connection	400 V. 50 Hz. 3 Ph. + N / 230 V. 50/60 Hz. 3 Ph.
Electrical consumption	Maximum consumption: 4 KW



4. TRANSPORT

The ELITE model CU mini 1200 are delivered packed on a pallet, crate or wooden box. Depending on your destination and means of transportation.

During all transport and transfer, the machine must be kept in its original vertical position, any variation in this position may lead to the loss of the guarantee.



Machine model	Dimensions (cm)	Weight (kg)
ELITE CU mini 1200	220x65x150	540



4.1. Instructions for unpacking and setting up

Take special care when lifting the load: The load may not be centered! To do this, use a forklift with blades long enough to support the machine, taking into account the width and depth of the machine for the calculation of the weights to lift.

Once the packaging has been opened, remove the fixing stops from the feet of the machine



To remove the machine from the packaging, use a forklift only, with blades long enough to properly support it.



Be sure to lift the machine by placing the forklift blades in the two holes located on each side of the machine for this purpose.



The blades must remain open to the total that the machine's hole allows, in order to have better stability.

**DANGER OF OVERTURNING THE MACHINE IF IT IS NOT HANDLED CAREFULLY.
AVOID BRAKES OR SUDDEN MOVEMENTS!**

Once the machine is located in its final location, you can now remove the protective film, which fixes and prevents the carriage from moving.



5.INSTALLATION

5.1.Machine placement

Before any work we must make sure that the machine is well aligned and does not oscillate at any of its ends, in which case it must be wedged to avoid movements. For its correct level it is necessary to use a spirit level. This check must be carried out both longitudinally and transversally.



Poorly leveling the machine can cause unwanted vibrations and premature wear of the linear guides.



WARNING: The machine must not be used under any circumstances by unqualified or unauthorized personnel.



5.2. Electrical connection



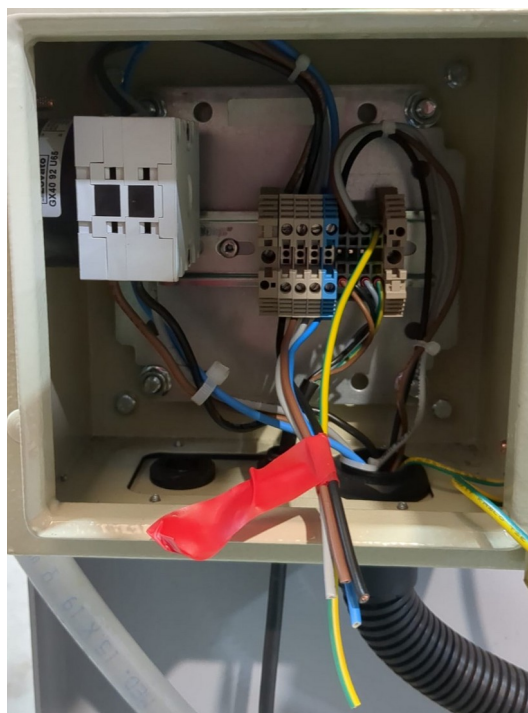
DANGER HIGH VOLTAGE!

The ELITE model CU mini 1200 grinding machine must be strictly connected to the voltage indicated in the machine order and on the machine itself. The connection to a voltage other than that indicated may cause a breakdown in the machine and represents a risk for people who use the machine.

This installation must be carried out by qualified technical personnel and checked with a voltage meter before turning on the machine.

It is absolutely essential that the cross-section of the connection cable is as required, that the machine has a dedicated outlet and is protected against overloads and shunts, and that it is as close as possible to the electrical outlet.

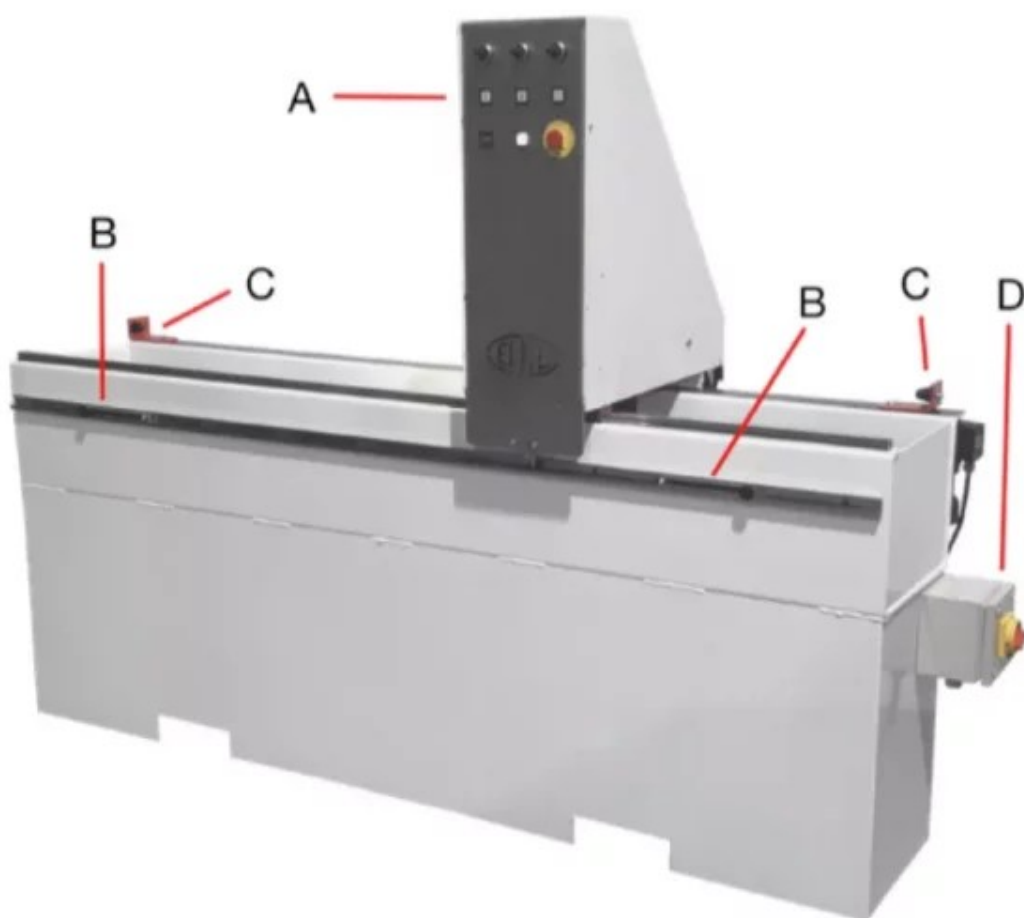
The electrical connection terminals have a red tape to facilitate correct connection.



ELITE does not assume any responsibility in the event of an incorrect electrical installation that may cause a malfunction of the machine and even personal or material damage.



5.3.Main components of the machine



- A.Control panel
- B.Carriage stops to limit carriage travel left or right.
- C.Safety carriage stops
- D.Main switch



5.4. Control panel



1. Machine light
2. Automatic cycle ON/OFF button
3. Grinding wheel up
4. Grinding wheel down
5. Selector for menu edit and navigation
6. Emergency stop



www.elite.es/en/support/manuals/cu-mini-1200

For more updated information and helpful videos on how to operate the machine, check our website www.elite.es